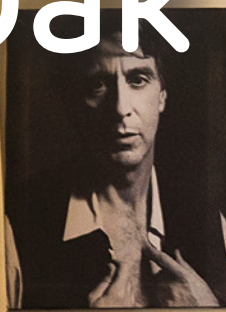
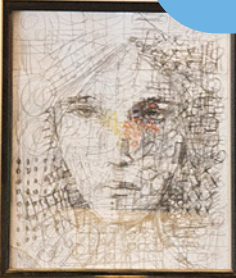




pocket



# Oak Grove NW2





## Starter homes for city makers

London's success depends on the middle income people who make it tick. Pocket helps these 'city makers' to own a home in London. Not just a share of a home, but 100% of their own apartment, in a building full of like-minded people.

Our apartments are for people who are priced out of most private housing, and 'salaried out' of social housing. They work in the public and private sectors, they are singles and couples, they're young and not so young. All are determined to buy their own place.

Anyone who currently lives in Camden, is not already a home owner, and has a current household income below £71,000, can apply to buy a Pocket home in Oak Grove NW2.

THIS IS BRIDGE SPCL 40  
A407 Chicklade Lane  
Chicklade, London  
THE RAIL AUTHORITY  
0207 243649

CRICKLEWOOD



# Oak Grove NW2 Outside

Oak Grove NW2 is a handsome three storey brick building containing 13 one bedroom Pocket homes, as well as a handful of private apartments.

Oak Grove is a charming residential street just 350 metres from Cricklewood station (Thameslink), and a 15 minute walk (about 1km) from both Willesden Green and Kilburn tube stations (Jubilee Line).

## Features

- A classic architectural style, in keeping with the local area
- Set back from the road, with a side entrance to the rear courtyard
- Quiet road in an established neighbourhood\*
- Outdoor planting in the rear courtyard where you can meet and relax
- Plenty of secure cycle storage for everyone who needs it.

\* This Pocket building backs onto a railway line... which is great for trainspotters, but does mean there will be some noise from passing trains, especially to the rear of the building.



# Oak Grove NW2

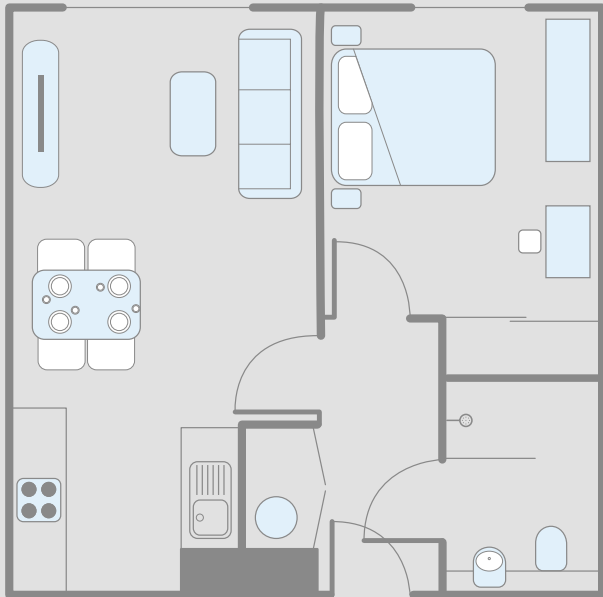
## Inside

Each apartment is built to our award-winning design specification, making best use of all available space and incorporating features which fit perfectly with the way London's city makers live today.

### Features

- Floor-to-ceiling windows for loads of natural light
- Underfloor heating
- Bags of storage space
- Sturdy gloss white kitchen units
- Hardwood oak floors
- Sensible neutral colours throughout
- Modern insulation to keep the heat in
- Well designed lighting
- Low running costs.

One bed floor plan: 38m<sup>2</sup> (409ft<sup>2</sup>)



Example of bedroom, Fermoy Road W9



# Oak Grove NW2

## The neighbourhood

Oak Grove NW2 is a quiet residential street between Kilburn and Cricklewood. You have a great selection of shops a couple of minutes' walk away on Cricklewood Lane, including lots of independent cafés and a small supermarket a few metres from the end of the road. Some of our favourites in the immediate area and slightly beyond include:

### 1. Meral's Café

Located just at the end of Oak Grove, Meral's is a family-run café which serves beautifully presented breakfasts and lunches, our favourite is the Brekkie Burrito.

### 2. Virgin Active

If you want a really local gym for an early morning swim or a workout on your way home from work, this couldn't be more convenient.

### 3. Mapesbury Dell

The Dell is a hidden gem, just across Cricklewood Broadway. A quiet garden that the community have recently reclaimed, it's accessed through a gated entrance tucked away between numbers 10 and 12 Hoveden Road. Perfect for a sunny Sunday morning reading the papers.

### 4. The Tricycle

The Tricycle Theatre is your local independent theatre, cinema and creative space. Converted from a music and dance hall, the Tricycle offers an exciting programme of stage performances and film, plus a vibrant bar and café.

### 5. The North London Tavern

This gastro pub is 2 minutes from Kilburn tube station, and has recently been refurbished. They offer a daily changing 'chop n glass', as well as other British food on their menu, and a regular DJ slot at weekends.

### 6. The Queensbury

Another lovely gastro pub a few stumbles and a stagger away from home. Locally-sourced food with a constantly changing menu, and a cute beer garden for summer evenings.

### 7. Sushi-Say

If you're a sushi-lover, this is a dream restaurant to have within walking distance of your home. A compact family-run Japanese outfit with stripped-back decor, and known locally for its sushi, yakitori and sake.





# Exploring the area

Although Oak Grove NW2 is located in the Borough of Camden, it feels a part of Cricklewood, one of London's upcoming areas. It's also not far from Willesden Green, another lovely area, and West Hampstead which has a more villagey feel. You can cycle to Hampstead Heath in 12 minutes, and Regents Park in about 20 minutes.





# London bound

## Getting there



### Train

The mainline from Cricklewood takes you to London St Pancras in under 15 minutes. Or you can get the tube from Kilburn (Jubilee Line) – walk there in 15 minutes, or get the bus in under 5 minutes – and you'll be in town before you know it.



### Bus

There are loads of bus routes running down Kilburn High Road, taking you all the way to town, and places in between.

- 16 to Victoria
- 189 to Oxford St
- 316 to Shepherd's Bush
- 332 to Paddington... and loads more!



### On your bike

Just 40 minutes ride to the centre of town and 20 minutes to Regents Park.

Note: Travel times calculated via tfl and Google maps







# Oak Grove Camden NW2

**Book a viewing**  
020 7291 3683  
[sales@pocketliving.com](mailto:sales@pocketliving.com)

While these particulars and plans are prepared with all due care for the convenience of intending purchasers, the information contained herein is a preliminary guide only. Neither the vendors, nor their agents or any person in their employ has any authority to make or give representation, warranty or guarantee (whether oral or written) in respect of, or in relation to, the development of any part thereof. The computer generated images are created from plan and are indicative only of how the completed buildings will appear. Pocket employs a policy of continuous improvement and it reserves the right to alter or amend the specification as necessary and without prior notice.

Oak Grove NW2 is a marketing name only. Prices, ground rent and estimated service charges are subject to contract.

[pocketliving.com](https://pocketliving.com)